

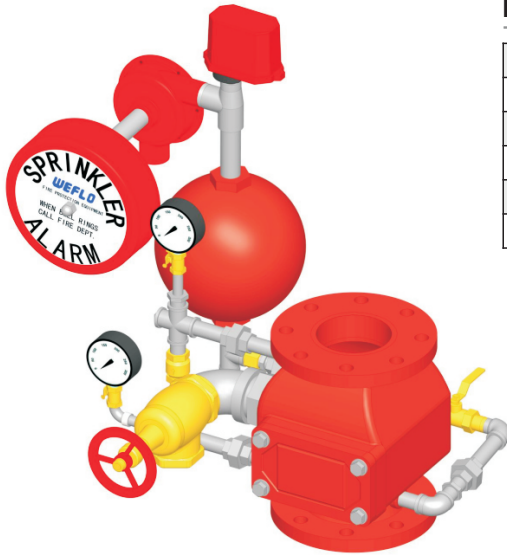
## Alarm Check Valve

## FIG. F1511-300 / F1512-300 / F1522-300

### Specifications

- Multiple End Types for Main Valve  
F1511-300: Flange by Flange  
F1512-300: Flange by Groove  
F1522-300: Groove by Groove
- Flanged Connections are Drilled per EN1092 -PN10/16 or ANSI B16.1 Class 125. (Other Flange Types Available Upon Request)
- Grooved Connections are cut in accordance with standard Groove Specifications for Steel Pipe.
- Excellent Flow Characteristics.
- Automatically actuates electrically and / or hydraulically operated alarms when there is a steady flow equivalent to the discharge rate for one or more sprinklers.
- Retard Chamber used in installations subject to variable pressure to help prevent false alarms.
- For use in Wet Pipe (automatic sprinkler) Fire Protection Systems.
- Alarm Check Valves should be installed vertically orientation.
- UL 193 Listed and FM 1041 Approved.
- 3C and CE Certified.
- Rated Working Pressure  
UL/FM: 20 to 300 psi  
CE: 1.4 bar to 16 bar
- Fusion Bonded Epoxy Coated Interior and Exterior to AWWA C550 Standard.

### Material Specifications



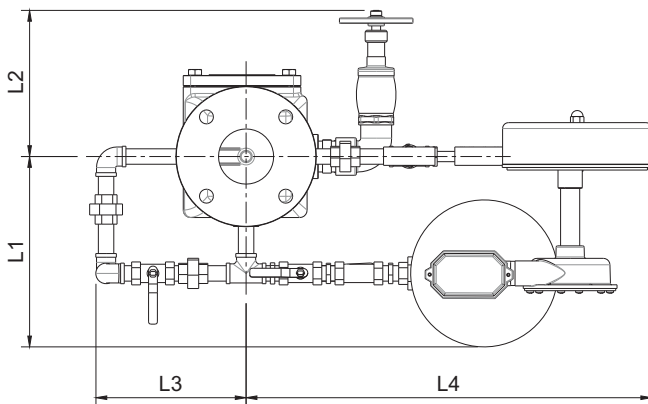
#### Main Valve

Part	Material	ASTM Specification	EN Specification
Body	Ductile Iron	A536 Grade 65-45-12	EN 1563 EN-GJS-450-10
Hinge Pin	Stainless Steel	A276 Type 304	EN 10088 X5CrNi18-10
Disc	Ductile Iron	A536 Grade 65-45-12	EN 1563 EN-GJS-450-10
Disc Seat	Rubber	D2000 EPDM	EN 681 EPDM
Body Seat	Bronze	B62 C83600	EN 1982 CuSn5Zn5Pb5

#### Accessories

Specification	Material
Screwed Pipe	Carbon Steel
Pipe Fittings	Malleable Iron
Ball Valve	Brass
Pressure Gauge	Assembly
Check Valve	Brass
Angle Valve	Brass
Y-Strainer	Brass
Restrictor	Brass
Water Motor	Assembly
Pressure Switch	Assembly
Retard Chamber	Gray Cast Iron

### Dimensions (mm/inch)



Size	L1	L2	L3	L4
2-1/2"	250/9.8	200/7.9	150/5.9	520/20.5
3"	250/9.8	200/7.9	150/5.9	520/20.5
4"	280/11.0	250/9.8	150/5.9	520/20.5
6"	300/11.8	250/9.8	190/7.5	520/20.5
8"	320/12.6	250/9.8	210/8.3	520/20.5

#### Notes

- 2.5" Valve are UL listed.
- Designs, materials and specifications shown are subject to change without notice due to the continuous development of our products.