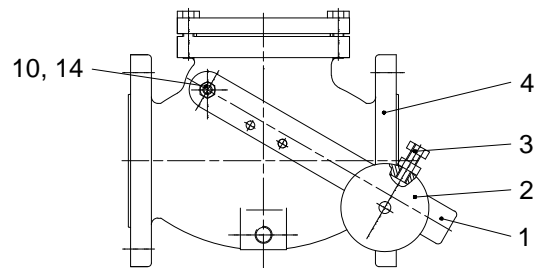
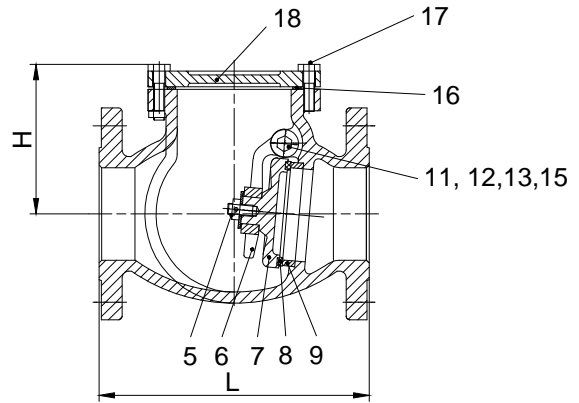
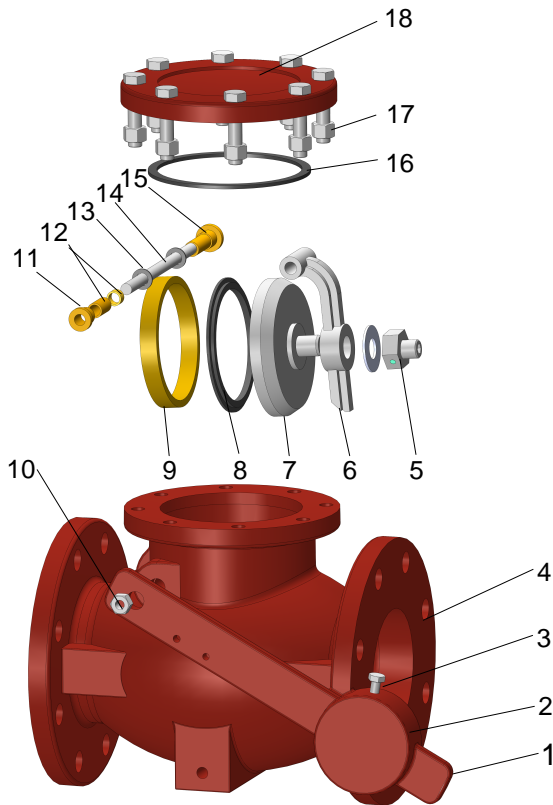


Size	2"	2.5"	3"	4"	5"	6"	8"	10"	12"
L	203/8.0	216/8.5	241/9.5	292/11.5	330/13.0	356/14.0	495/19.5	622/24.5	699/27.5
H	121/4.8	135/5.3	141/5.6	168/6.6	182/7.2	215/8.5	267/10.5	305/12.0	343/13.5



No.	Parts	Material	ASTM Specification
1	Lever	Carbon Steel	A29 1020
2	Weight	Cast Iron	A126 Class B
3	Bolt	Carbon Steel	A307 Grade B
4	Body	Ductile Iron	A536 Grade 65-45-12
5	Screw/ Nut/ Pin	Stainless Steel	A276 Type 304
6	Hanger	Ductile Iron	A536 Grade 65-45-12
7	Disc	Ductile Iron	A536 Grade 65-45-12
8	Disc Trim	Rubber	D2000 EPDM
9	Body Seat	Bronze	B62 C83600
10	Nut	Carbon Steel	A307 Grade B
11	Bushing Nut	Brass	B16 C36000
12	Bushing	Brass	B16 C36000
13	Spacer	PTFE	
14	Shaft	Stainless Steel	A276 Type 304
15	Plug	Brass	B16 C36000
16	Gasket	Graphite	
17	Bolt/ Nut	Carbon Steel	A307 Grade B
18	Bonnet	Ductile Iron	A536 Grade 65-45-12

CONFIDENTIAL & PROPRIETAR INFORMATION
THE DATA CONTAINED IN THIS DRAWING IS THE SOLE PROPERTY OF WEFLO VALVE LLC. ANY REPRODUCTION IN PART OR AS A WHOLE WITHOUT THE WRITTEN PERMISSION OF WEFLO VALVE LLC IS PROHIBITED.

WEFLO®

UNLESS OTHERWISE SPECIFIED :
DIMENSIONS ARE IN MM

MATERIAL

WEIGHT

FINISH

DO NOT SCALE DRAWING

TITLE:

GA Drawings of Swing Check Valve
with weight

REV.	DESCRIPTION	DATE	BY
A	INITIAL ISSUE	01/26/21	THX

DWG. NO.

5110-GA

SCALE: NONE - UNLESS NOTED

REVISION

A

SHEET 1 OF 1

NAME	DATE
ENGINEER/ DRAFTSMAN	THX 01/26/21
1st CHECK	HXF 01/26/21
2nd CHECK	SJX 01/26/21
3rd CHECK	HTX 01/26/21
4th CHECK	TJF 01/26/21
APPROVED	ZHT 01/26/21