

## Vane-Type Waterflow Detector with NPT Threads Size 1"-2"

FIG F6001T

### Specifications

- Equipped with tamper resistant screws to prevent unauthorized entry.
- Two synchronized switches are enclosed in a durable terminal block. Terminals are easy to read and wire.
- Built-In mechanical time delay feature; minimizing the risk of false alarms due to pressure surges or air trapped in the system.
- Offers excellent performance during riser vibrations caused by large in-rushes of water.
- Designed and built for accuracy and repeatability.
- Flow sensitivity range: 4-10 GPM(15-38LPM).
- Contact rating: 8A@250VAC, 3A@24VDC, 2.5A@ 30VDC.
- UL/ULC Listed.
- FM Approved.

### Working Pressure

- 450 PSI

### Working Temperature

- 0-68°C

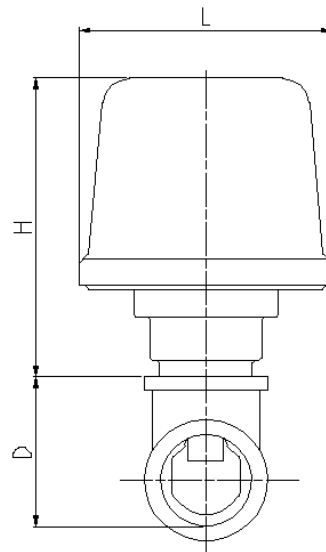
### Corrosion Protection

- Fusion Bonded Epoxy Coated Interior and Exterior or Enamel Spray Paint, Interior and Exterior.

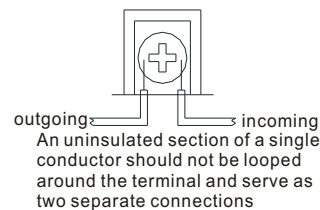
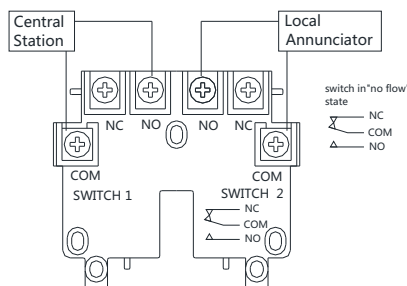
### Dimensions

Size	1"		1 1/4"	
	/mm	/inch	/mm	/inch
L	93.2	3.67	93.2	3.67
H	110	4.33	110	4.33
D(Depth)	53.8	2.12	62.5	2.46
Size	1 1/2"		2"	
	/mm	/inch	/mm	/inch
L	93.2	3.67	93.2	3.67
H	110	4.33	110	4.33
D(Depth)	68.8	2.71	81.8	3.22

### Schematic



### Typical Connections



The designs, materials and specifications shown are subject to change without notice due to the continuous development of our products.